



THINKING WINES



UNIVERSIDADE DE ÉVORA

Cartuxa

FUNDAÇÃO
EUGÉNIO
DE ALMEIDA



THINKING WINES



JOSÉ RAFAEL M. DA SILVA

Cartuxa

PEDRO BAPTISTA



**Active proximal sensing
on vineyard vigor vegetation
management**

TERROIR

There are unique aspects
of a specific place that shape
grape quality

TERROIR

**Topography; Soil; Climate;
Genetics; Plant population;
age; management...**

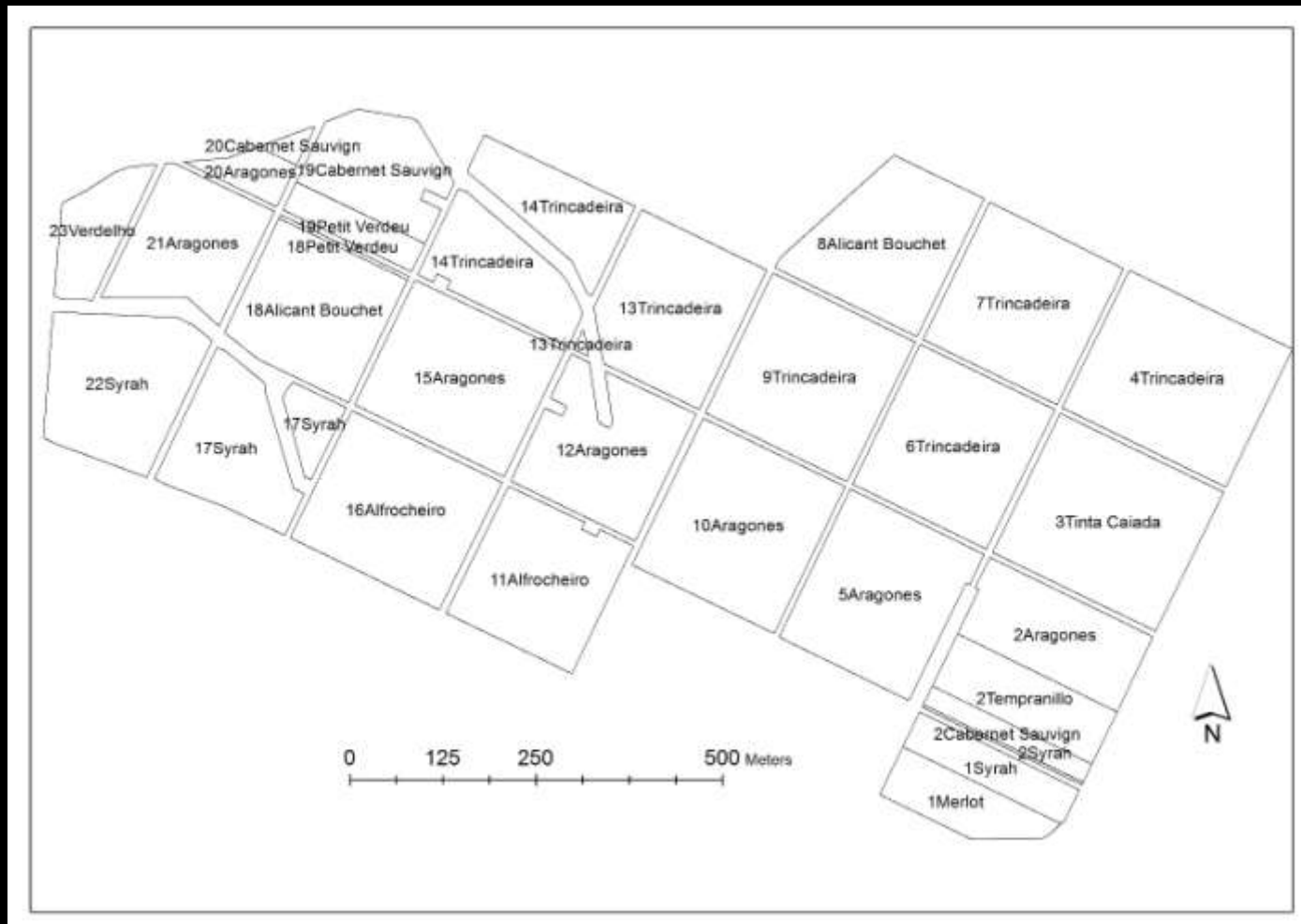
...plant temporal tensions
integration during a vegetative
cycle

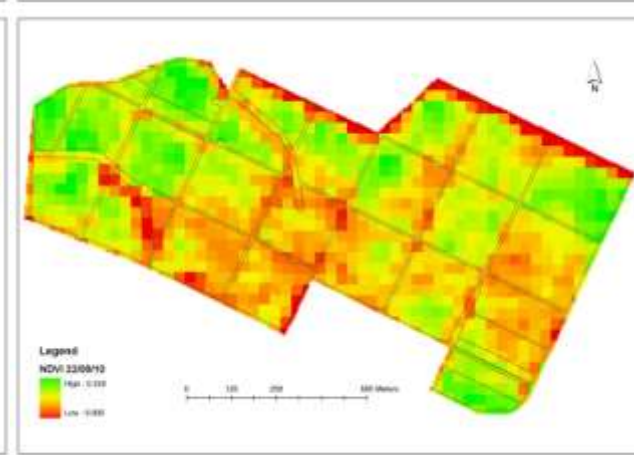
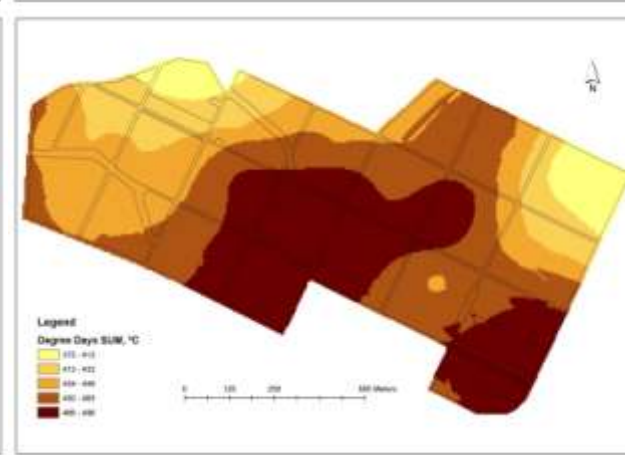
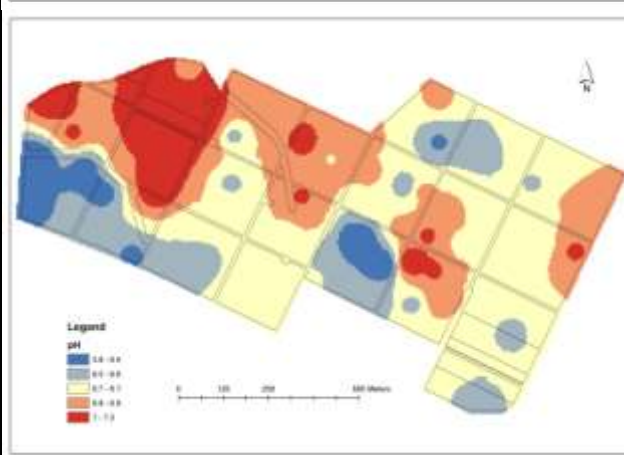
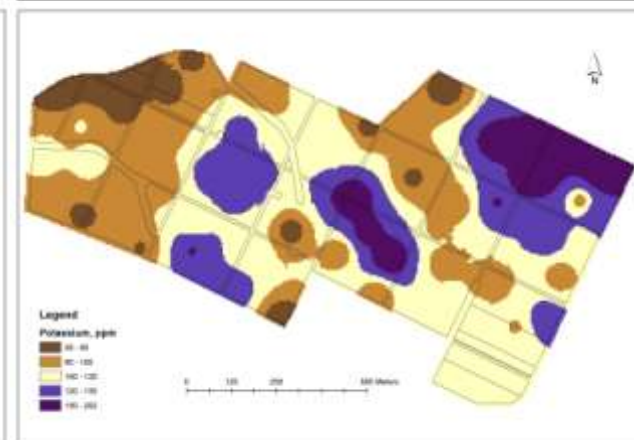
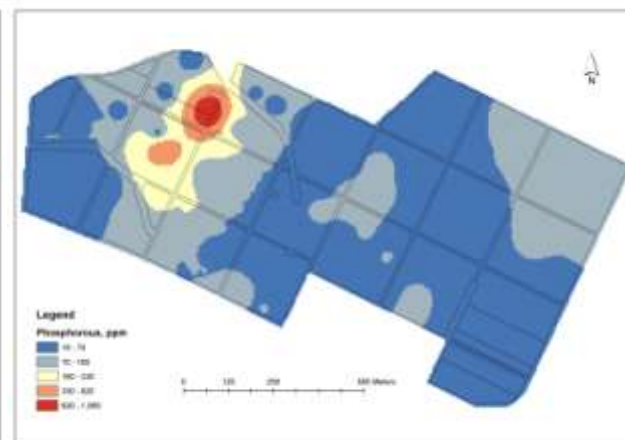
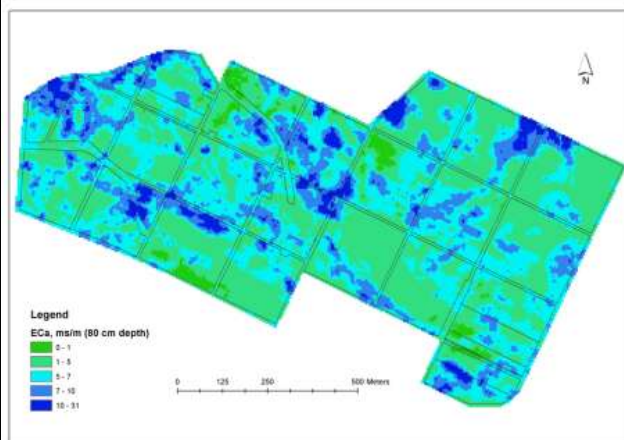
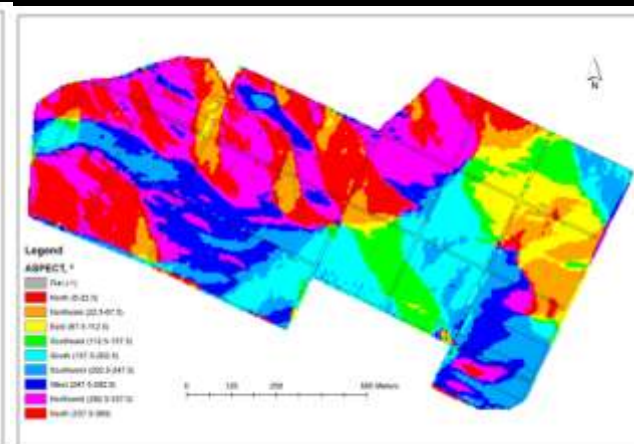
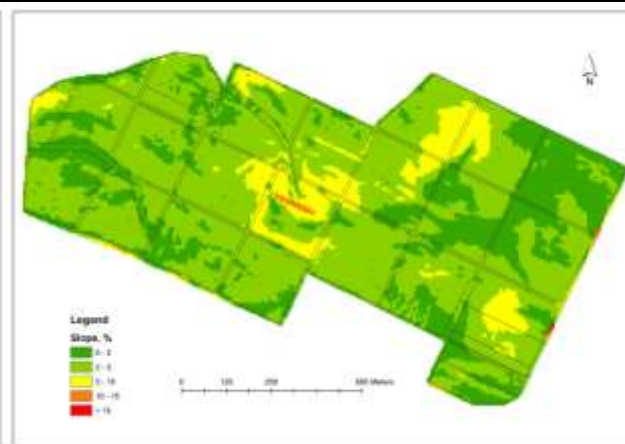
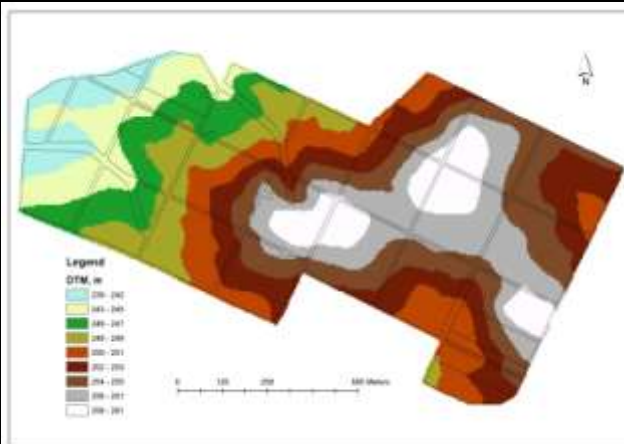
TERROIR

YES

It' s a very complex
multi-factorial
phenomenen

“CASITO - Genetics”

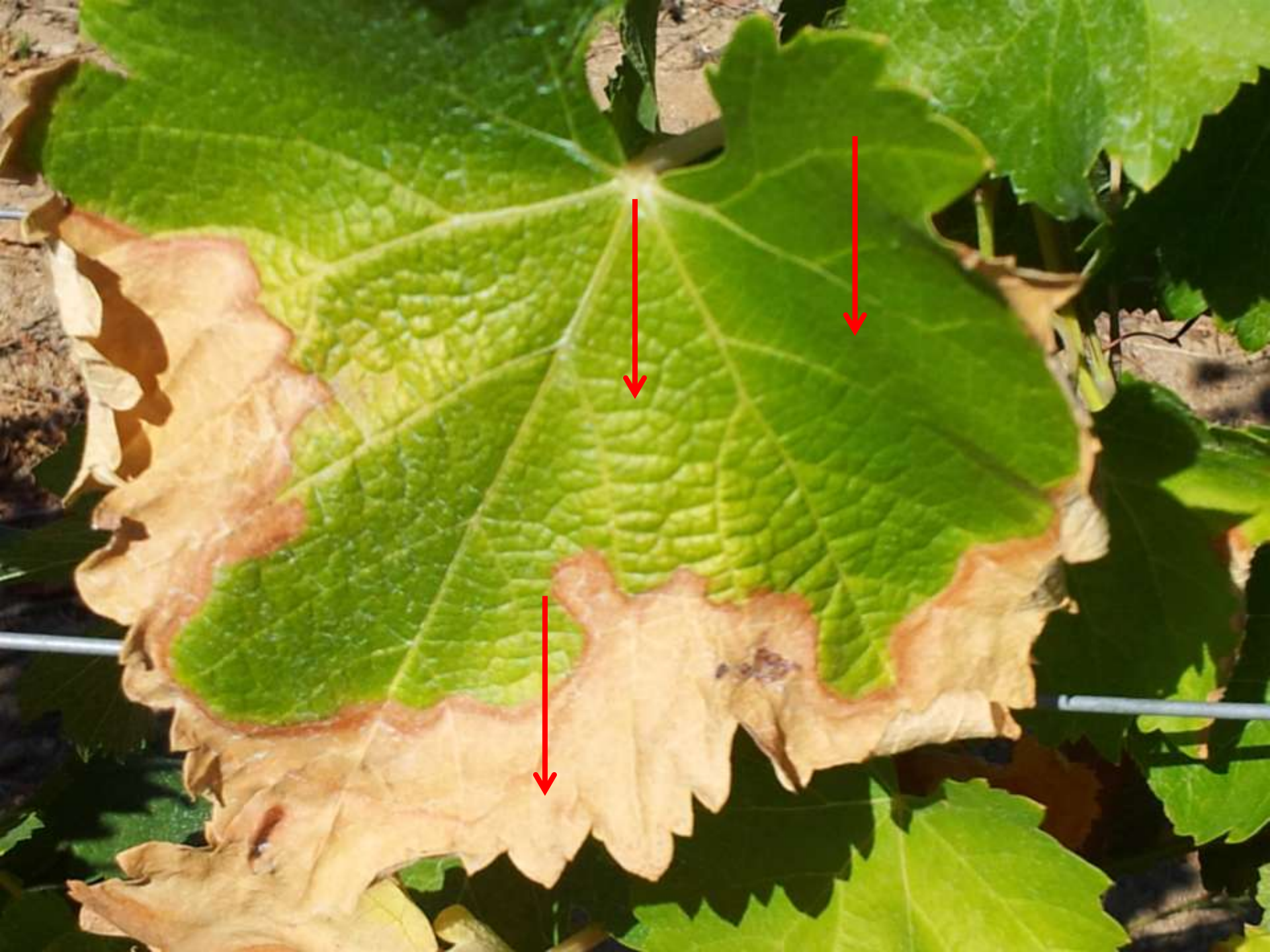


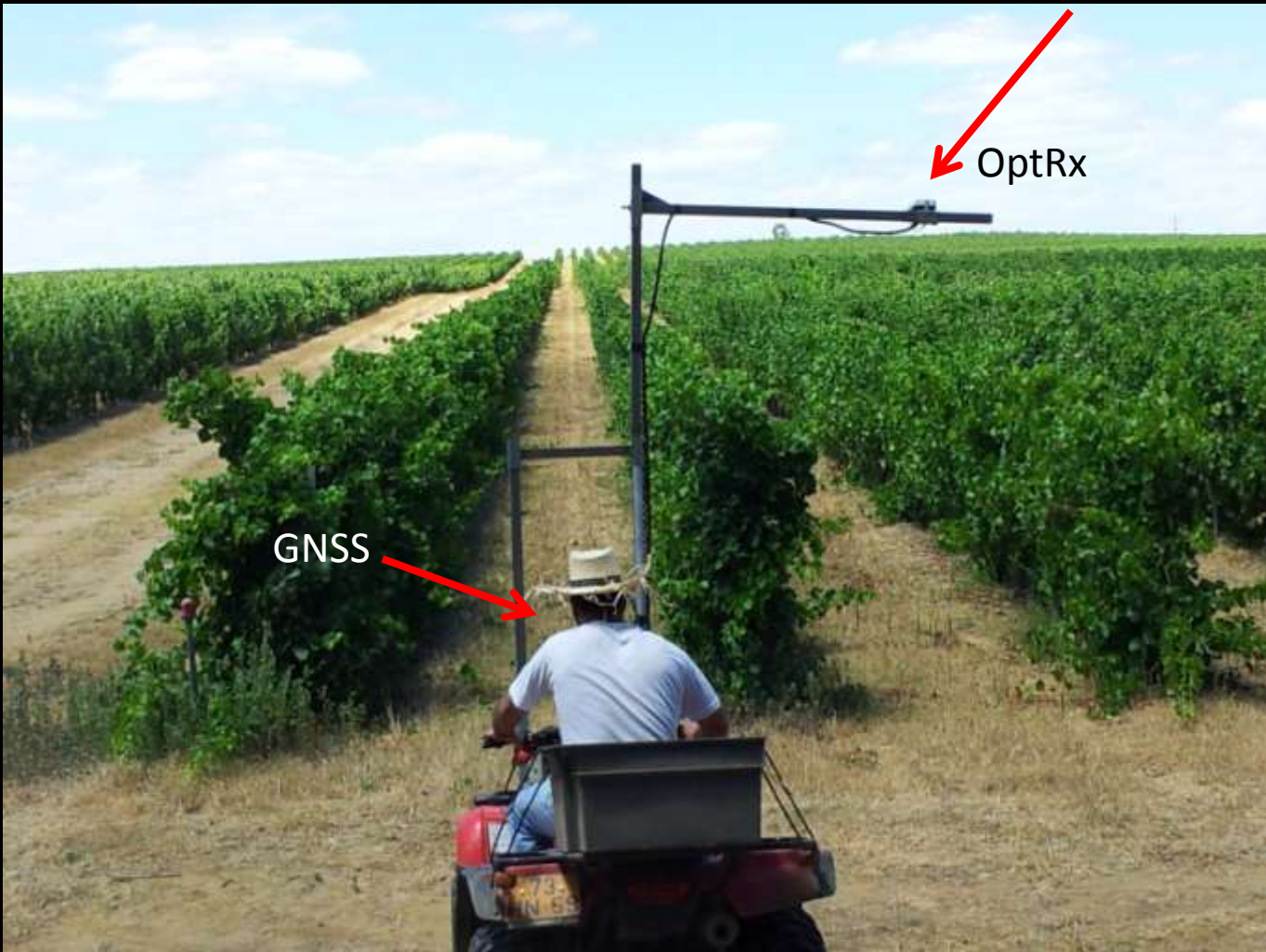


“VEGETATIVE VIGOR”





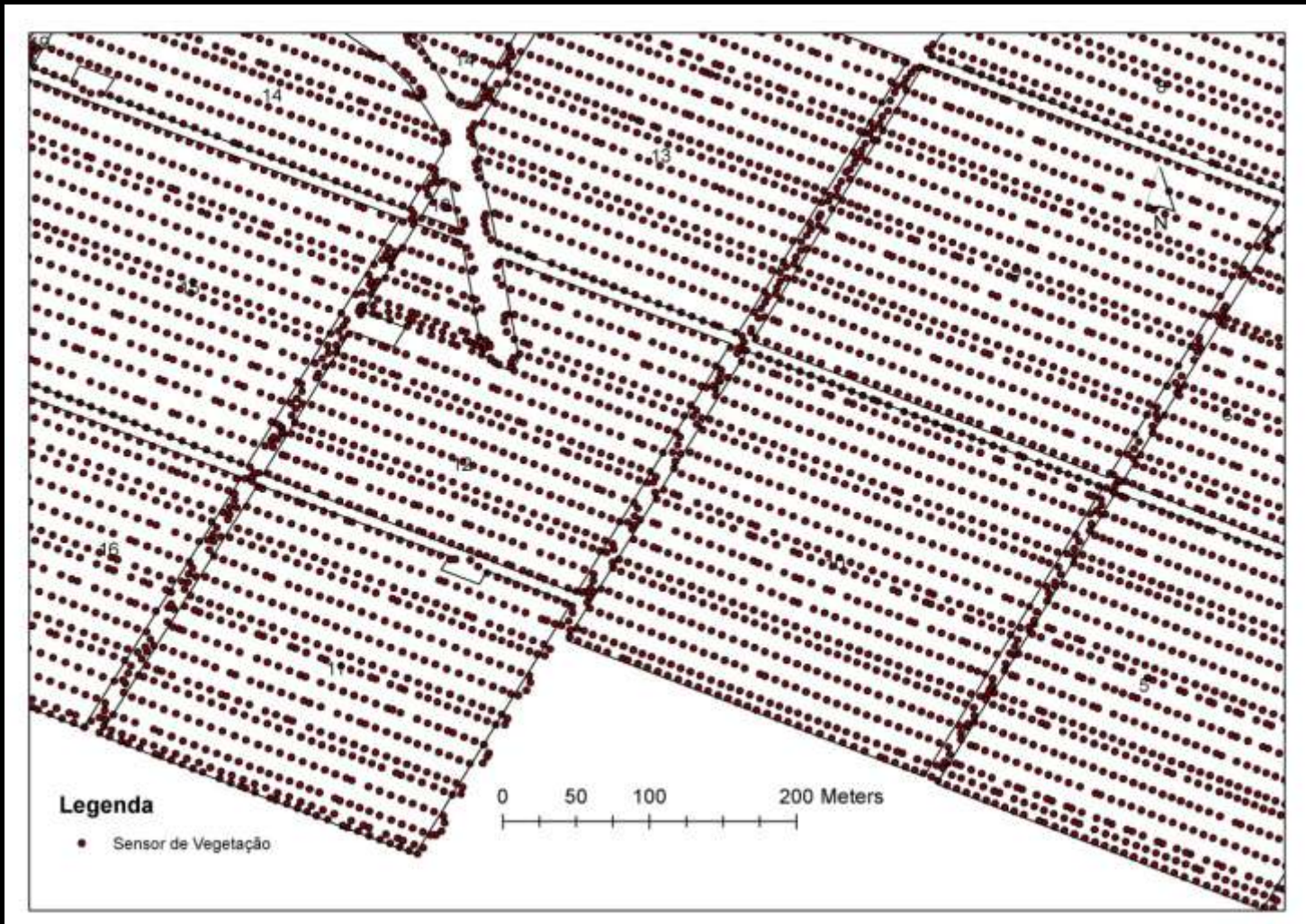




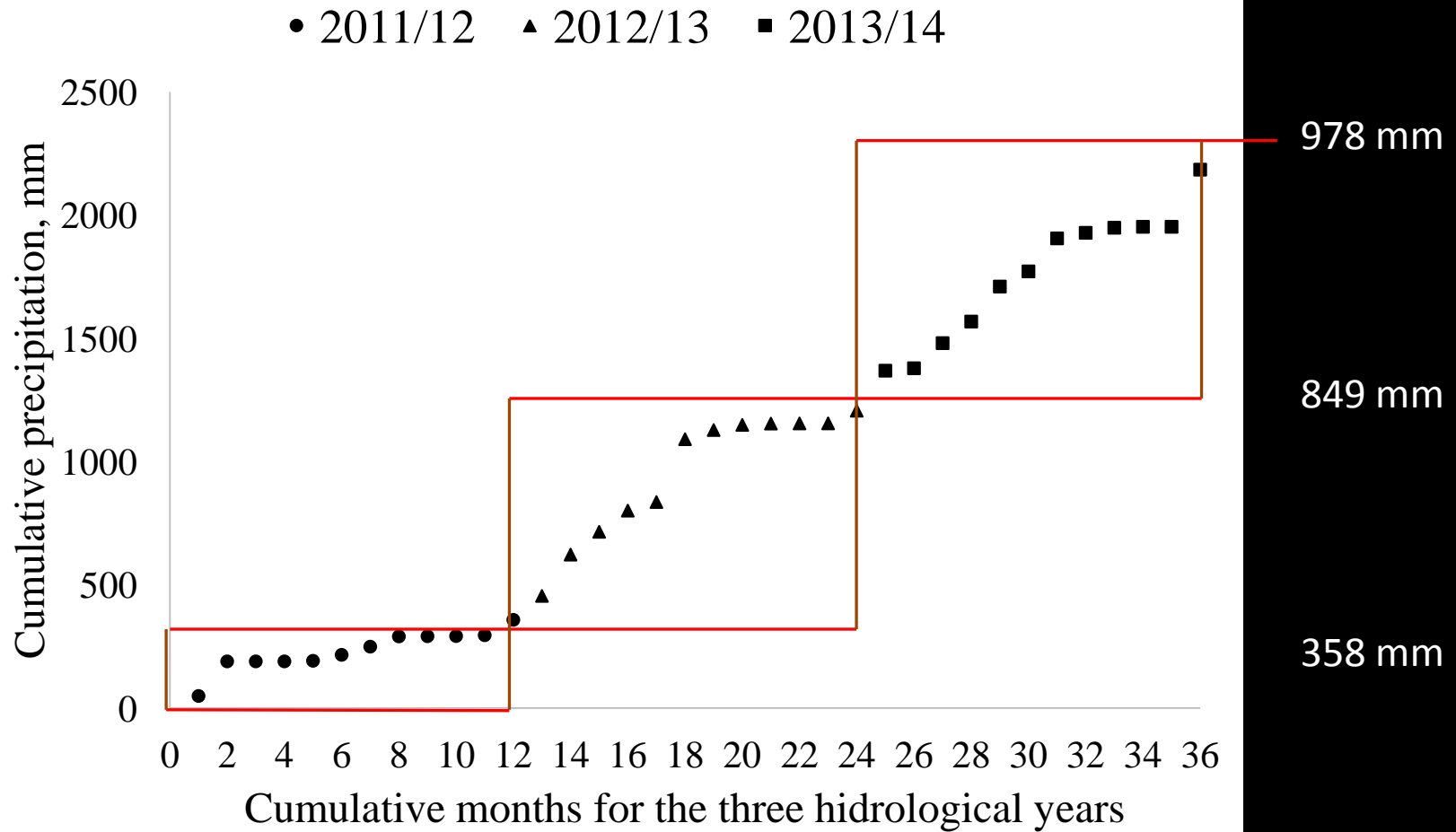
OptRx

GNSS

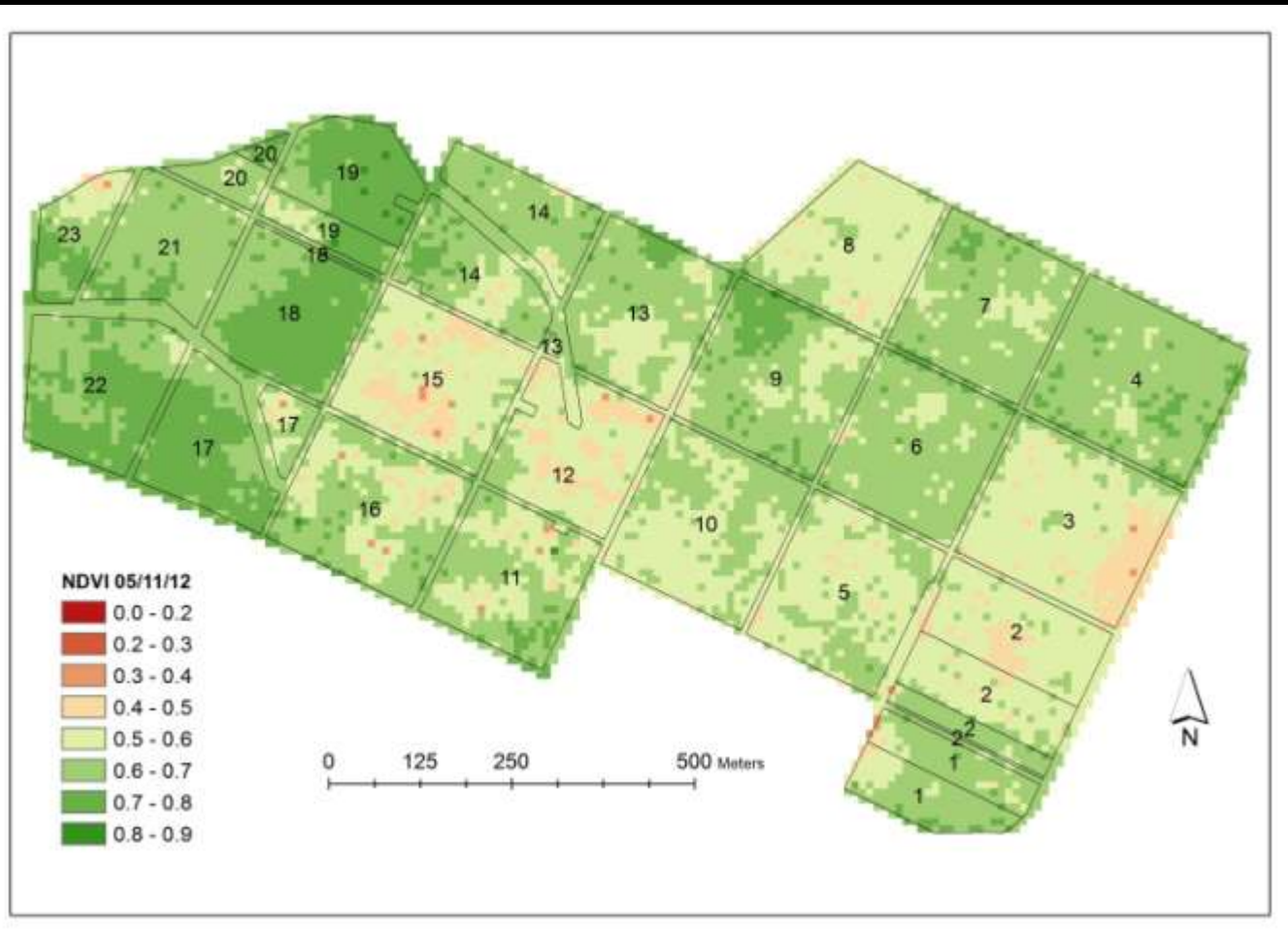
“BASE DE DADOS GEOGRÁFICA”



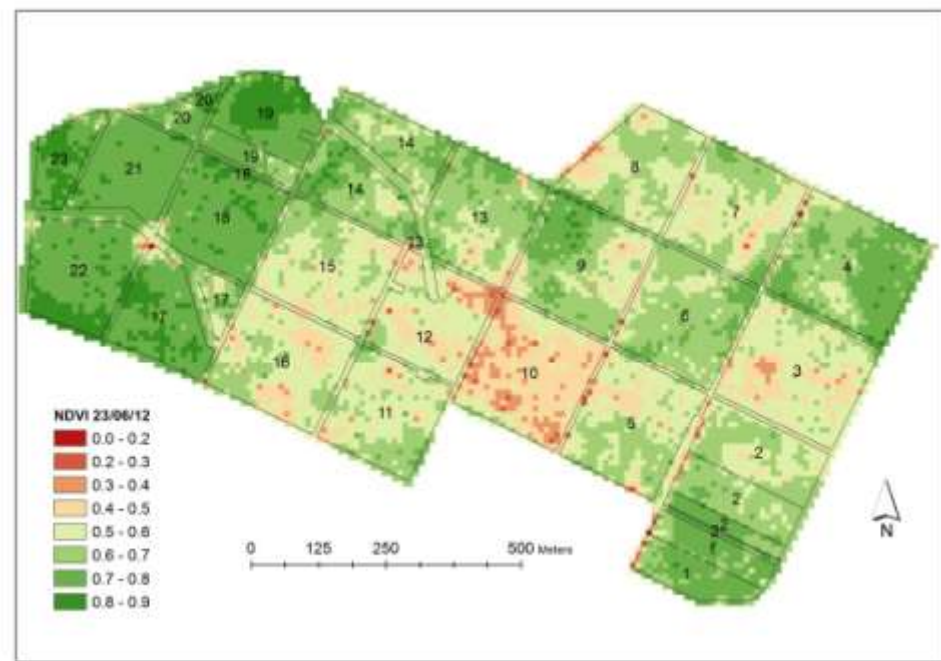
“YEAR QUALITY”



“NDVI 2012 ANIMATION”



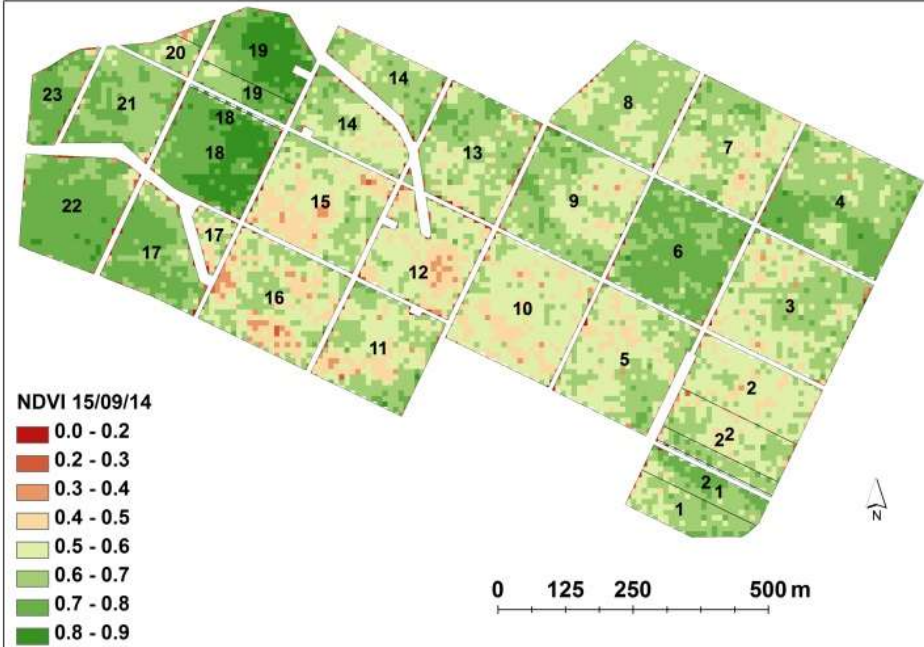
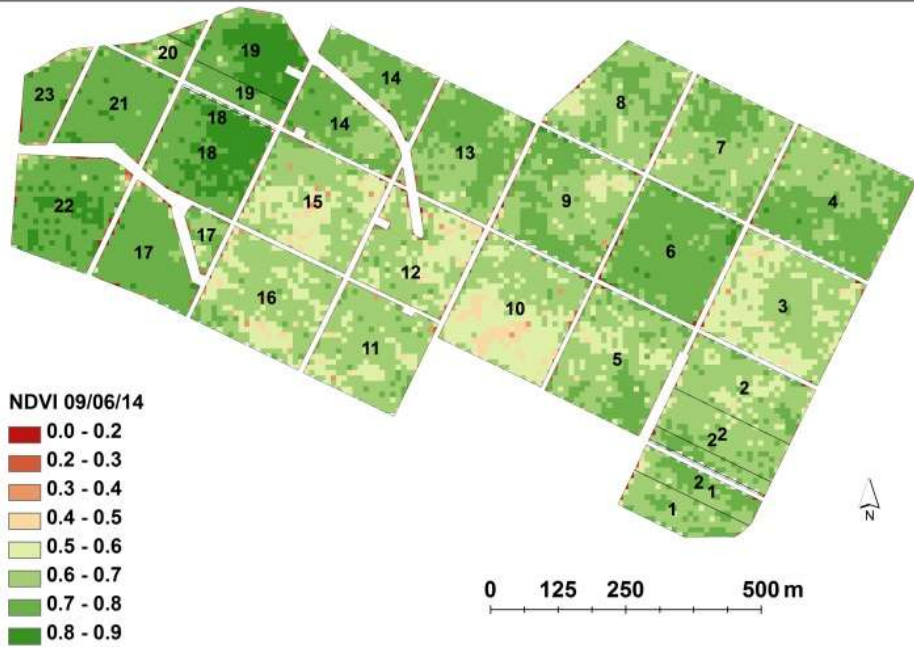
2012



2013



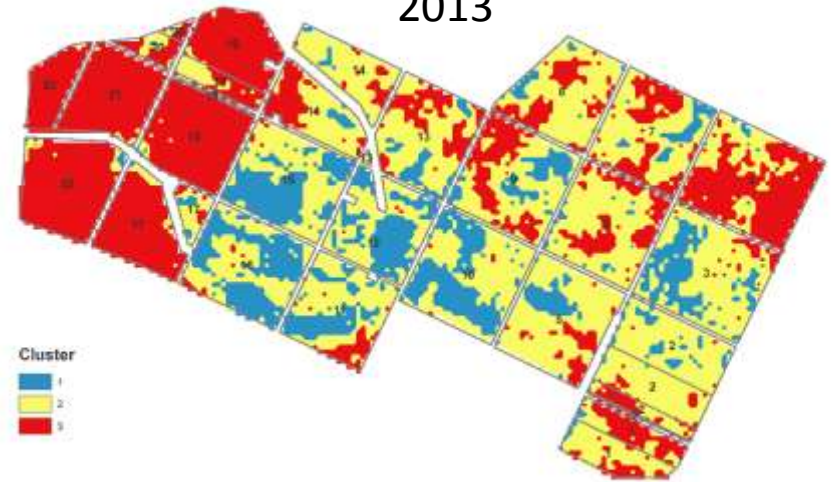
2014



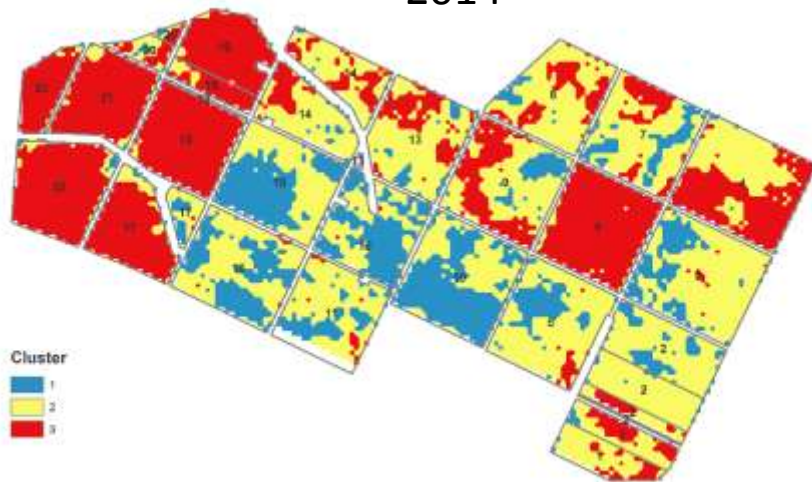
2012



2013

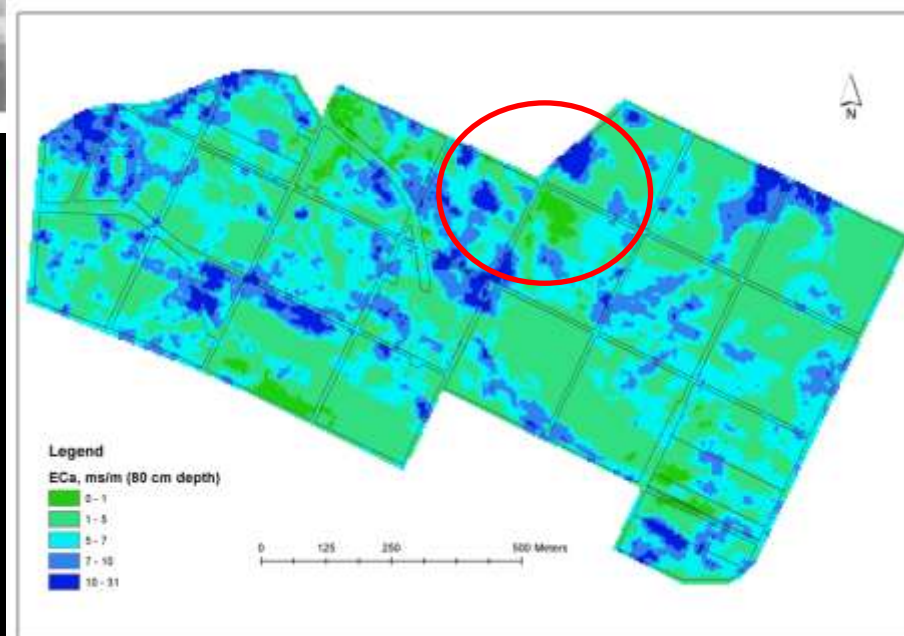
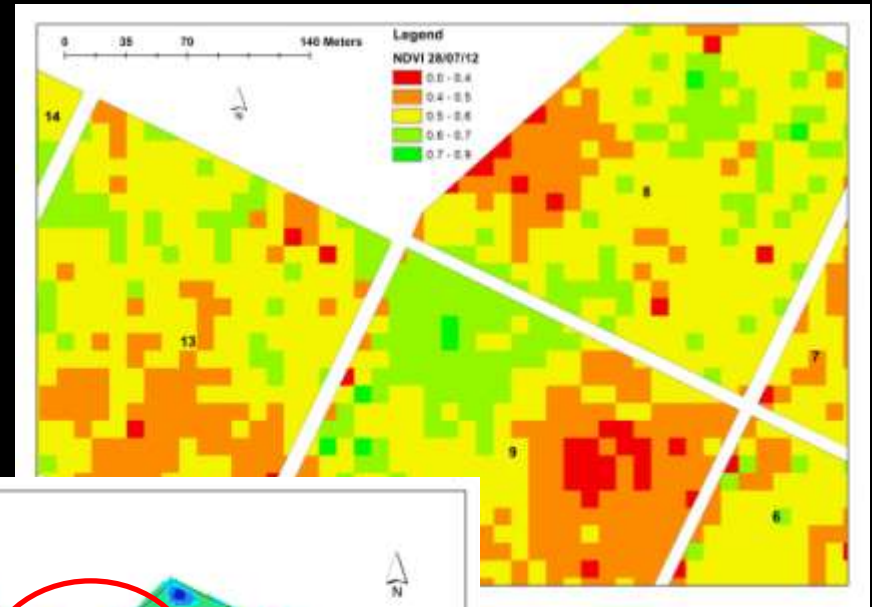
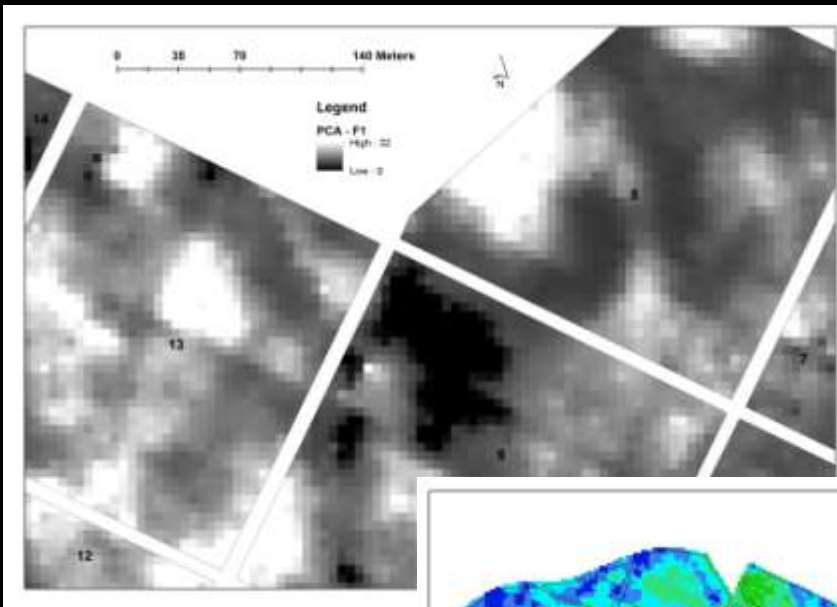


2014



“CLUSTERS”

“SOIL ECa - VEGETATION”



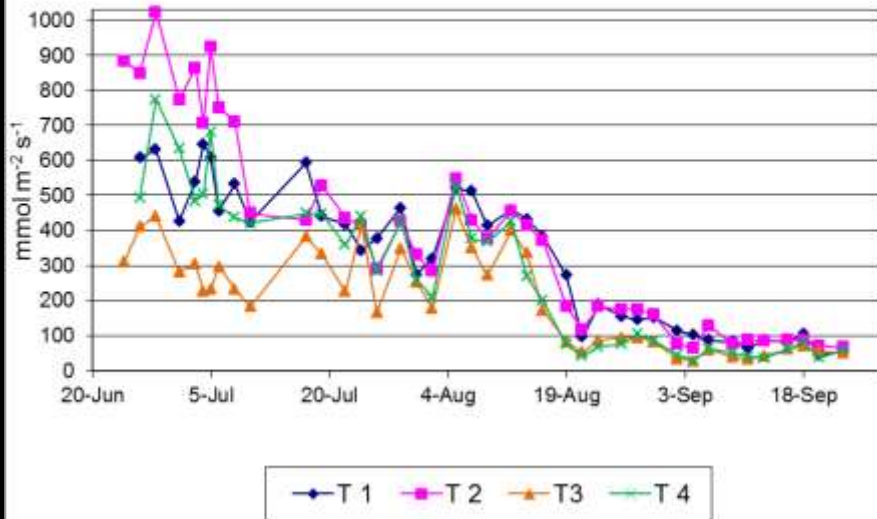
“Estom. Cond. - VEGETATION”



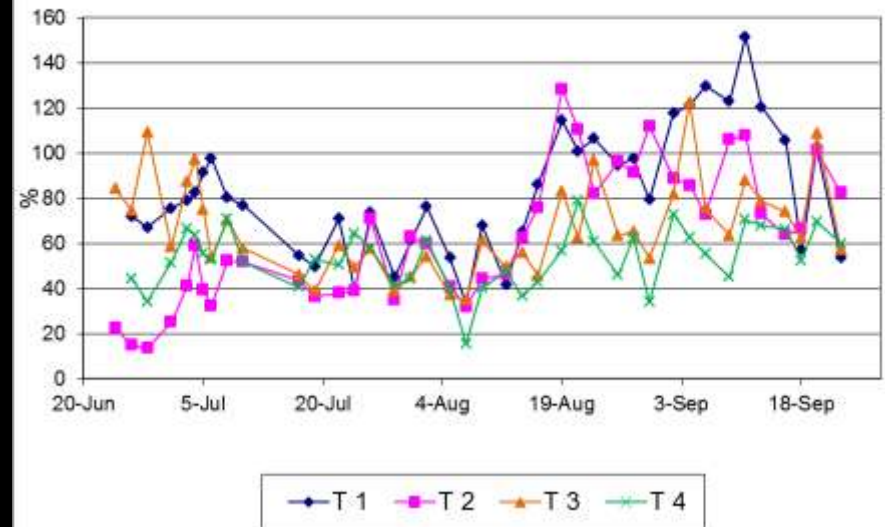
“Cond. Estom. - VEGETAÇÃO”

2013

gs - 12:00h

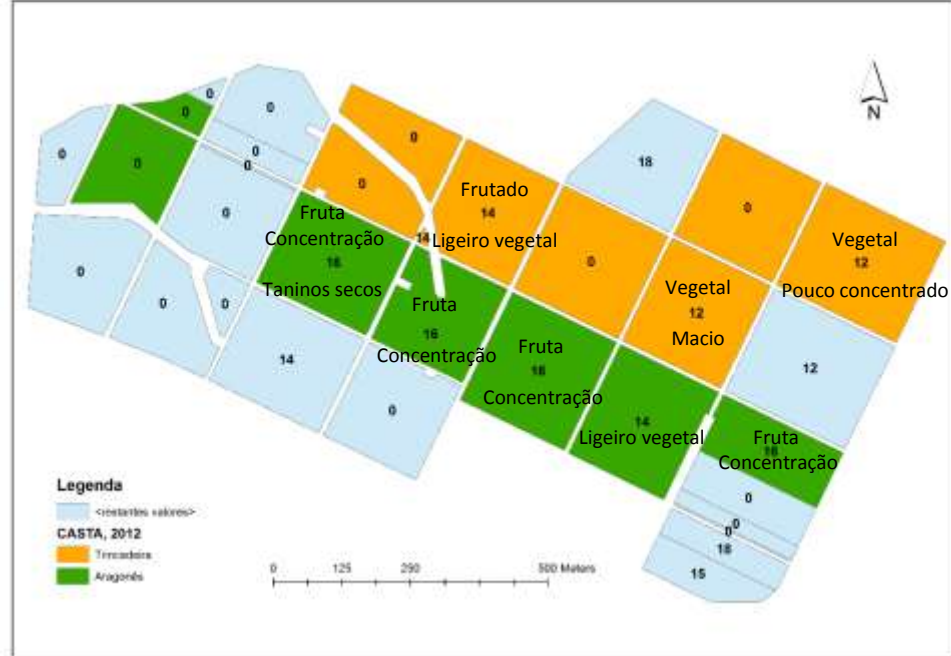
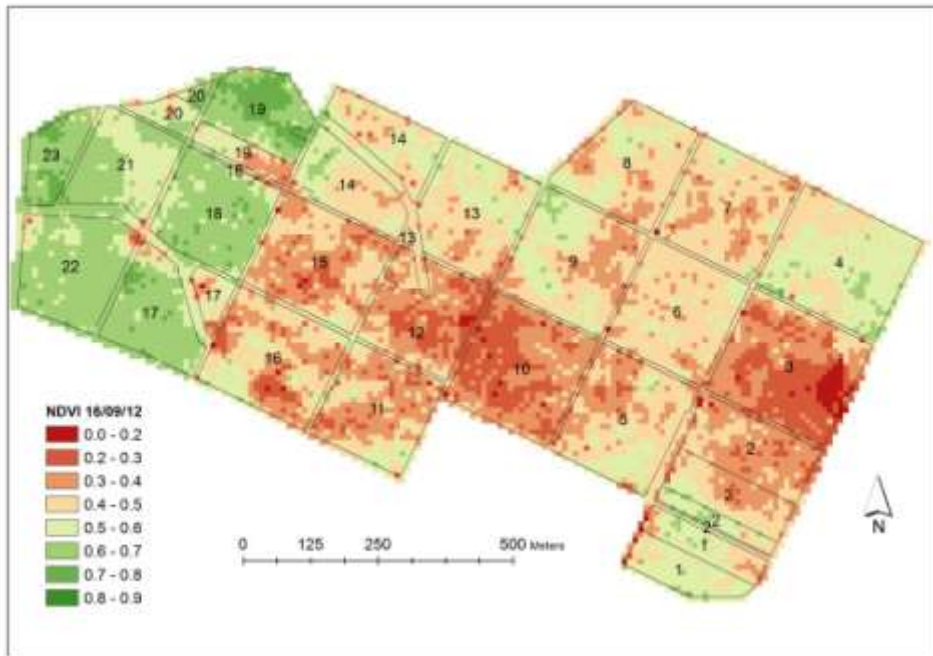


CV - 12:00h



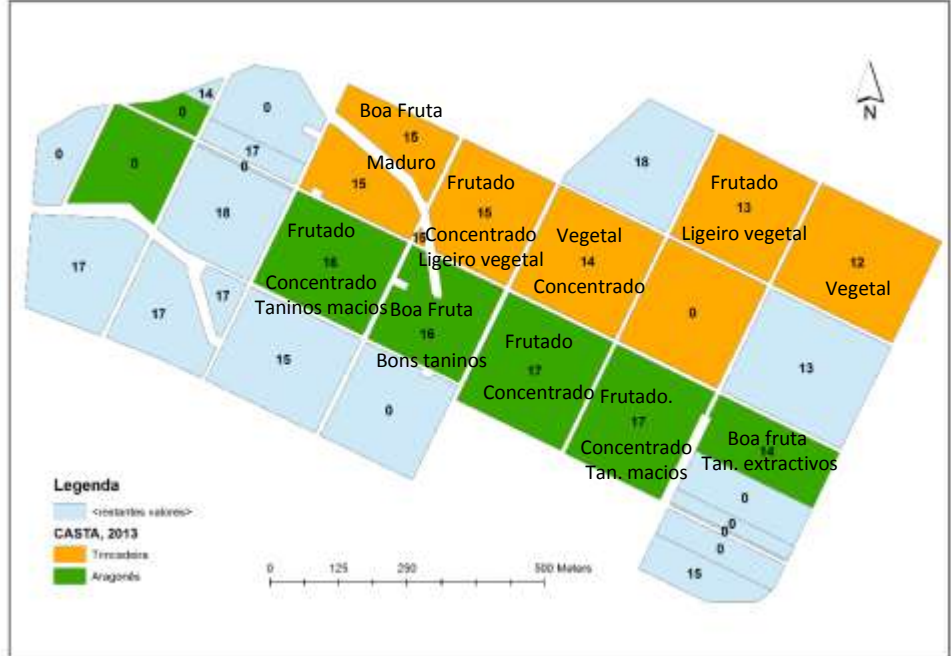
2012

Classificação



2013

Classificação



“WINE - VEGETATION”

- KEY QUESTIONS:
- i) In order to obtain a better productivity/quality relationship how do we manage vegetation on dry and wet years?

“WINE - VEGETATION”

- ii) In wet years, with more soil water availability what should be our strategy:
 - a) reduce vegetation in order to save water and save money; or
 - b) stimulate vegetation in order to exhaust soil water reserves and better control plant water stress, so important to shape quality in the end of the maturity process?

“WINE - VEGETATION”

- iii) In dry years what should be our strategy:
 - a) reduce vegetation in order to save water and Money; or
 - b) improve vegetation to better control productivity and plant water stress?
- iv) Can we model water plant stress in order to shape wine characteristics? Is vegetation important in this modelling process?

“PHREATIC – VEGETATION - WINE”

- v) Nationally there exist wine regions with groundwater water table relatively high, inclusively in summer time, when compared with other regions (e.g.: Palmela region), in this way how do we have to manage vegetation and plant water stress in order to obtain quality?

“SOIL – IRRIGATION - VEGETATION - WINE”

- vi) How to manage all these restrictions:
 - a) enterprise strategy; b) soil; c) phreatic; d) dry year; e) wet year; f) wine characteristics; g) genetics characteristics;...

in order to achieve the wine we want?

“CONCLUSIONS”

THERE IS NO
UNIQUE SOLUTIONS

“CONCLUSIONS”

- WHAT TYPE OF WINE DO WE WANT?
- WHAT TYPE OF YEAR DO WE HAVE?
- WHAT TYPE OF PRHEATIC EXIST?
- WHAT TYPE OF VEGETATION DO WE HAVE AND WHAT TYPE OF VEGETATION DO WE NEED?
- WHAT TYPE OF WATER STRESS DO WE NEED?
- WHAT TYPE OF WINES FASCINATE US?



THE THINKING WINES



UNIVERSIDADE DE ÉVORA



FUNDAÇÃO
EUGÉNIO
DE ALMEIDA

“THECNOLOGICAL VINEYARD PLATAFORM”

<http://inalentejo.uevora.pt>

Username: anonimo

Password: cabernet

“THECNOLOGICAL VINEYARD PLATAFORM”

VINHOS QUE PENSAM

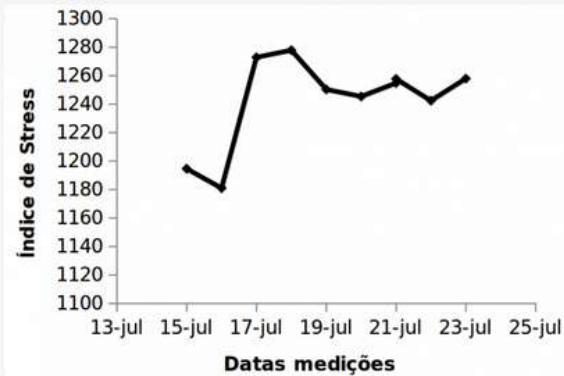
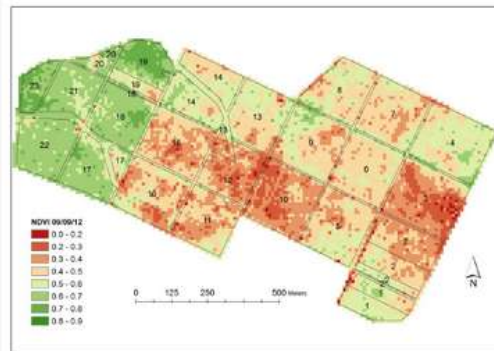
inalentejo.uevora.pt



VINHOS QUE PENSAM
Plataforma tecnológica vitivinícola

Entrar

“VINHOS QUE PENSAM” “THINKING WINES”



“THECNOLOGICAL VINEYARD PLATAFORM”

Firefox Login

inalentejo.uevora.pt/lizmap/lizmap/www/index.php/jauth/login/form

Google

Login

login

password

Remember me

Login

la orden RITECA u Évora CITI INLENTEJO ProDeR

1234523788

17:46 25-10-2013

“THECNOLOGICAL VINEYARD PLATAFORM”

